



# FOLD DOWN MOUNTING HINGE

CHAIRS  
& SEATS

SEAT  
MOUNTS

PEDESTAL  
SYSTEMS

MOUNTING  
SYSTEMS

WAVE  
DAMPENING

ACCESSORIES

Part Number: 1080031  
Patent Pending



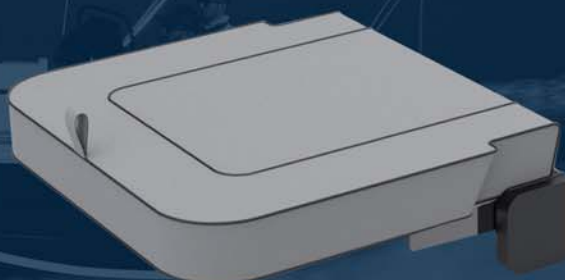
- Spring loaded fold down mounting hinges
- Made from stainless steel with black plastic protective covers
- Seat hinge has a 2° pitch
- Hinges fold down for easy stowage
- Simply lift front to release lock then press seat back and down into stow position



Folded Position

## Fold Down Seat

- Durable and innovative design provides maximum comfort and support
- Premium high quality upholstery made from marine grade weather resistant vinyl
- High-strength composite substrate with high density foam padding
- Stainless steel seat hinge has a 2° pitch



Folds down easily  
for stowage

## Fold Down Table System



- A space saving design, without the sacrifice of comfort or support
- Folds easily and stows in the down position
- Table Fold down Hinges are made from mild steel with black plastic covers
- Light-weight molded marine grade plastic table top